

Success built on solid relationships

Kelly Deeks

Having already proven its capabilities in handling massive, record breaking commercial concrete pours, Christchurch's JFC Pumps is now targeting the residential construction sector, providing its considerable expertise and the flexibility to complete both large and small building projects, with a focus on delivering high quality service every time.

JFC Pumps was created in December 2006 as a joint venture with Firth Industries, to provide a specialist service for the supply and pumping of concrete under one umbrella to the companies' joint customers.

Since its formation, and since the Christchurch earthquakes of 2010 and 2011, JFC Pumps' fleet has doubled from four to eight pump trucks to keep up with the demands of the greater Christchurch rebuild, as well as its general concrete pumping services.

Along with large commercial projects, JFC Pumps also undertakes a lot of residential work and light commercial projects.

"We can help our clients source placers, organise concrete, and organise traffic management," says JFC Pumps managing director Tim Johnstone.

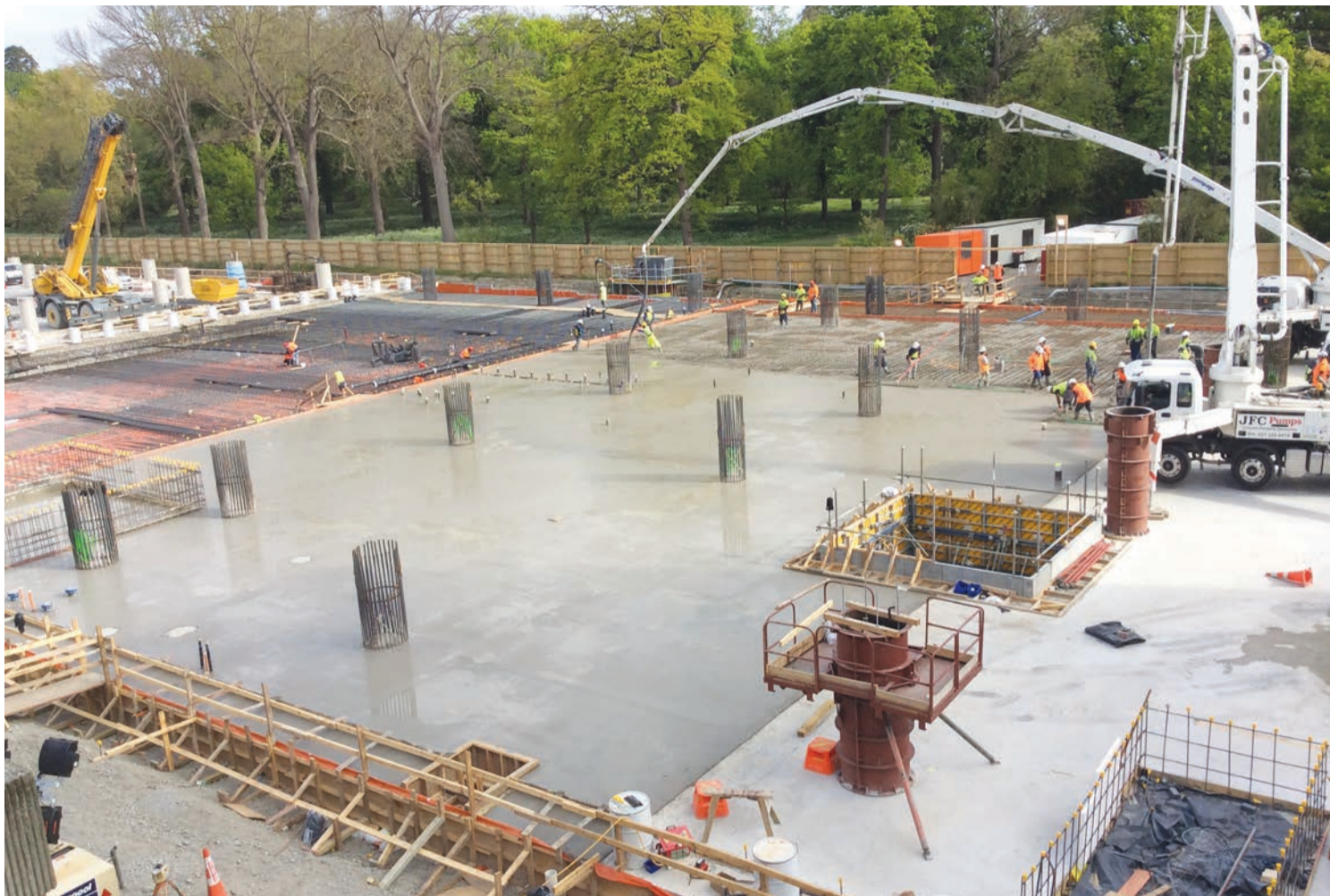
"We can also provide site visits to check which pump will be best for the job."

JFC Pumps' fleet consists of two concrete pump brands. "We choose Italian made Sermac SRL concrete pumps for our medium to large requirements, as they are world-renowned for their functionality and reliability," Tim says.

"For our smaller requirements, we choose Japanese made Kyokuto concrete pumps, who have been making them for more than 30 years."

These two brands have similar values as JFC Pumps and have stood the test of time, with proven reliability, safety, and ease of operation.

"Since our early years we decided to buy new, high capacity Italian manufactured Sermac concrete pumps from Italy from New Zealand agent A W Trucks," Tim says.



JFC Pumps was created in December 2006 as a joint venture with Firth Industries, to provide a specialist service for the supply and pumping of concrete under one umbrella to the companies' joint customers.

"Our two flagship 37 metre Sermac high capacity pumps have the ability to meet and service commercial customers needs for large pump requirements, while our four 27 metre Sermac TC3 pumps have the size and footprint to enable them to fit into most sites, and our two 18 metre pumps fit into sites with even tighter access."

Tim and JFC Pumps recently played a key role in developing the New Zealand concrete pumping

JFC Pumps success has been built around the many relationships the company has built up over the years, with both its suppliers and its clients.

health and safety guidelines in conjunction with WorkSafe New Zealand.

In conjunction with the New Zealand Concrete Pumping Association and WorkSafe New Zealand, Tim and JFC Pumps also provided training for new WorkSafe inspectors at the JFC Pumps site in Christchurch.

"This training was to upskill them with the requirements and risks involved with the operation of concrete pumps to meet safety

standards under the Health and Safety at Work Act 2015 (HSWA) introduced by the government in April 2016."

Tim says JFC Pumps success has been built around the many relationships the company has built up over the years, with both its suppliers and its clients.

"We look forward to being able to help you with your next building project requiring our expertise in this field," he says.





AW TRUCKS LIMITED

CONCRETE PUMPS www.awtrucks.co.nz





GreenFuels
Environmentally friendly fuels



bioGOLD
NEW ZEALAND BIODIESEL

FOR ON-SITE DIESEL REFUELLING

phone [03] 335 0273
or email info@greenfuels.co.nz



MARTIN HYDRAULICS LTD

10 Braeburn Drive, Hornby, Christchurch
www.martinhydraulics.co.nz



Phone: 03 344 0307 Fax: 03 344 0308 email: sales@martinhydraulics.co.nz
24hr Hose Repair Service, Hydraulic Sales and Service since 1973
Proudly supporting JFC PUMPS Ltd