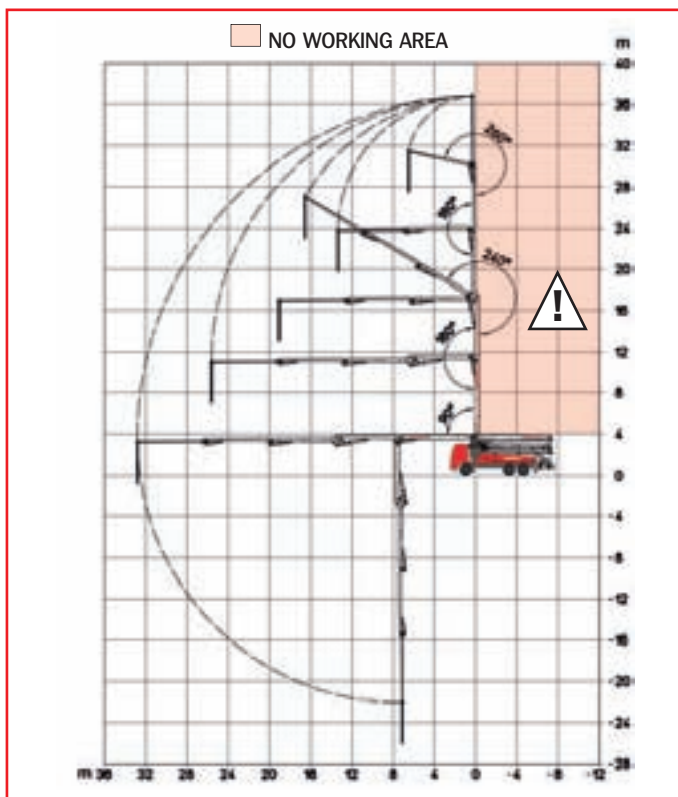
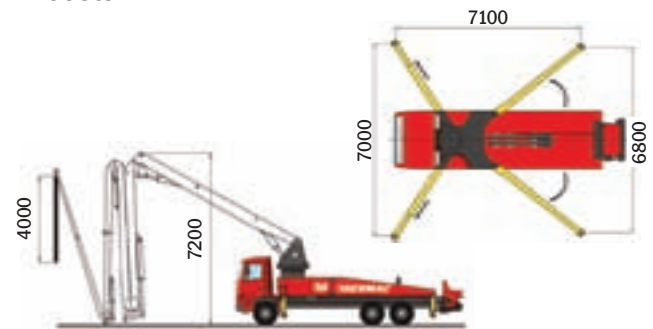


\*Variable dimension according to the chassis



**MAIN FEATURES**

- Perfect assembling on standard 3 or 4 axles chassis.
- Boom with welded box section, heads obtained directly by cores.
- High torsion rigidity boom stabilization with integrated front and rear outriggers.
- Steel building with high yield tensile strength and structural check of critical points by means of Finite Elements Method (FEM).
- Compact building, reduced weight.
- High functionality, reliability and low operating costs.



**PUMPING UNIT**  
technical specifications

Model	SCL130A	SCL150AHP	SCL185A
Concrete output (MAX.) m <sup>3</sup> /h*	130	149	184
Concrete pressure bar*	61	76	61
Pumping cylinders (Ø x stroke) mm	230x2000		
Stroke volume	83,09 l		
Numbers of strokes per min.	26	30	37
Max oil pressure	350 bar		
Hopper capacity	600 l		
Output opening	178 mm		

**PLACING BOOM**  
technical specifications

Max. height from ground	37 m
Max. horizontal reach	33 m
Max. downward reach	-26 m
Number of sections	5
Pipeline diameter	125 mm
Minimum height opening	7,2 m
Flexible terminal hose	4 m
Turret rotation angle	370°
1 <sup>st</sup> , 2 <sup>nd</sup> , 3 <sup>rd</sup> , 4 <sup>th</sup> and	90°-180°
5 <sup>th</sup> section opening angles	240°-180°-266°
Opening system	"Multi Z"
Front outriggers	Telescopic diagonal spread
Rear outriggers	Swing spread
Front opening	7,00 m
Rear opening	6,80 m
Max pressure in circuit	380 bar

\*Rod side feeding

## MAIN FEATURES

### SCL CONCRETE PUMP

- System with 2 alternate cylinders and exchange valve.
- Concrete "S" valve made from anti-wear fusion material of different thickness, integrated command shaft and ribbed profile because of lever command.
- Pumping unit has an automatic lubrication system fitted on high usage points.
- Automatic wear compensation system between the wear plate and the cutting ring increases wear resistance and maximum pumping capacity.
- Chrome-lined concrete cylinders to ensure high resistance.
- Concrete hopper made from antiwear steel and designed in an optimal shape to avoid concrete stagnating.
- Engine speed and pumping volume automatically adjust according to slump of concrete, speed of delivery and distance of delivery.
- Radio remote controls the placing boom and the output of concrete – with emergency stop/start button.
- Large capacity concrete hopper made from anti-wear steel and mixer shaft with screwed blades in anti-wear steel.

### PLACING BOOM

- 5 section "Z" fold placing boom, constructed from lightweight elastic steel. The boom is especially designed for maximum versatility and is ideal for placing high concrete output with great flexibility; pipeline Ø 125 mm (5")
- Hinge points made with double support pin and "Long Life" lubrication.
- Hydraulic cylinders made by high yield strength steels.
- Overcentre valves are fixed directly onto the oil inlet to allow soft operation and great reliability.
- Boom control with proportional distributor to ensure smooth operation.
- Boom rotation is controlled via a limit safety switch with a hydraulic brake system.
- Hydraulically operated outriggers with front 'X' opening and rear swing-out opening. Separate operation controls on either side of the machine. Position kept by check valves.
- All controls are made to conform with 2006/42/CE and UNI EN12001 in accordance with health and safety guidelines.

### ASSEMBLY on vehicle

3-axle chassis with short cab	Wheelbase 3.850/4.500 mm
4-axle chassis with short cab	Wheelbase 4.500 mm
Total mass on ground	Ton. 26/32

## STANDARD EQUIPMENT

- Proportional radio remote control provided with double speed in boom moving, automatic free frequency research, manipulators with 8 positions and output variator.
- Proportional emergency remote control and serial cable.
- Pumping hydraulic pumps with fixed displacement.
- Boom hydraulic pump with fixed displacement.
- Gear hydraulic pumps for service purpose .
- Safety block-out at the opening of tank outlet hatch and hopper grid.
- Gauges and mini flexibles set to supervise the pressure.
- Membrane water pump 75 l/1', 30 bar
- Electric vibrator on hopper grid and push-button control panel at distance.
- Water tank capacity 940 l.
- Heat exchanger with hydraulically controlled fan.
- Nr. 1 light projector.
- Basket for accessories on the hopper side.
- Plates for outriggers support and housing with safety lock.
- Switchboard completely protected on the right side.
- Little ladder to reach the footboard for check and maintenance.
- Tool kit for cleaning and maintenance.

## OPTIONAL ACCESSORIES

- Concrete double wall pipeline with tempered core.
- Additional light projector on hopper.
- High pressure kit.
- Flashing magnetic base lights to be positioned on the outriggers.
- Pipeline kit for pumping on the ground.
- Multi-level water pump.
- Automatic release of terminal hose.
- Spare pipe holder on the rear arms.
- High pressure water pump with fan-shaped hose nozzle.
- Atomizer 16 litres, 8 bar.
- Compressor for pipeline cleaning
- Aluminium cover for hopper



**SERMAC S.p.A.**  
Via Como, 3  
20054 Nova Milanese (MI), Italy  
Phone +39 0362 364320  
Fax +39 0362 364598  
www.sermacspa.com  
sermac@sermacspa.com



REPRESENTED BY: