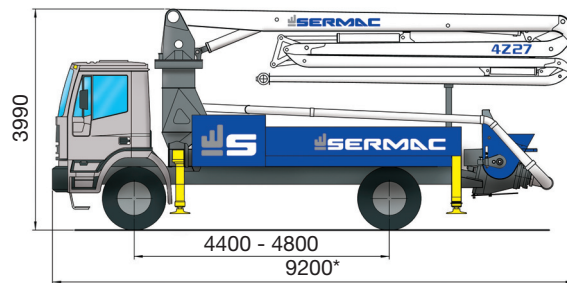
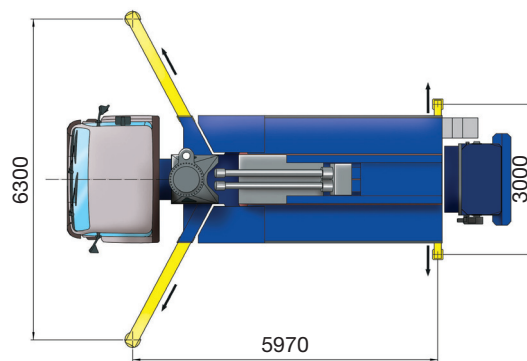
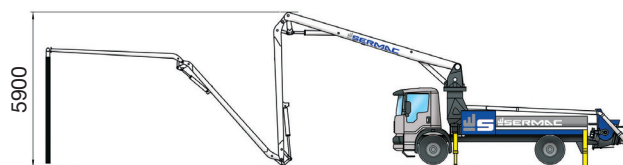
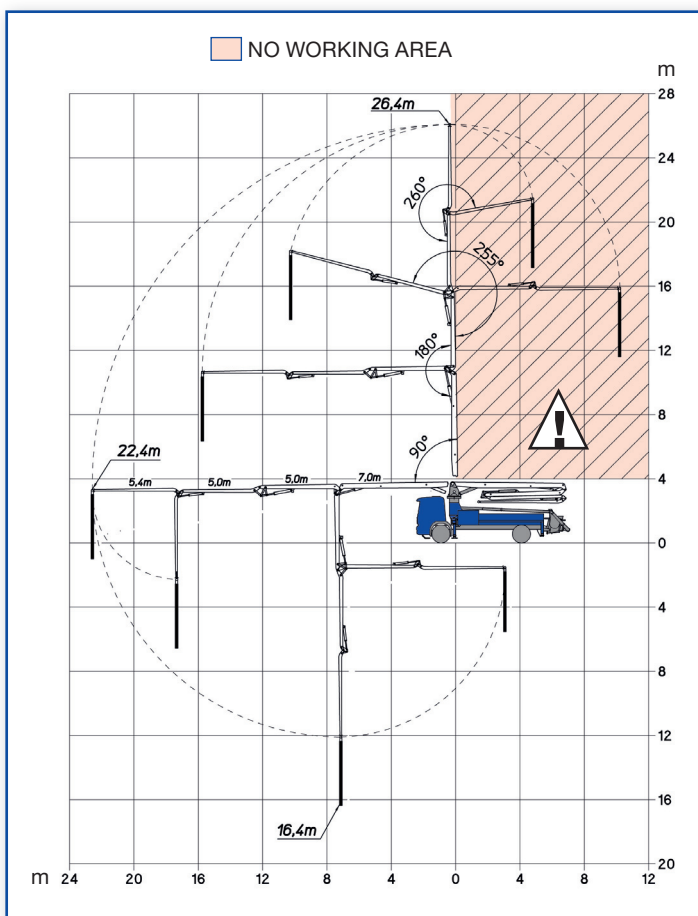




## ADVANTAGES

- Concrete pump created by - R&D SERMAC DESIGN - to enable maximum performance.
- Concrete pump produced, assembled and tested in Italy (Milan).
- High precision and great versatility of movement thanks to 4Z27 boom. Placement fast, easy and in tight spaces.
- Italian and German main components, top quality steel.
- Frame pump designed for high torsion rigidity with integrated outriggers.
- Optimal load distribution, precise assembly on standard 2 axes chassis.
- Compact equipment, total weight < 19 tons (41887 lb).
- Placement fast, easy and in tight spaces.



\* Dimensions vary according to the truck assembly

## PUMPING UNIT specifications

MODEL	SCL130A	SCL150AHP	SCL185A
MAX. THEORICAL OUTPUT*	130 m³/h (170 yd³/h)	149 m³/h (195 cy/h)	184 m³/h (241 cy/h)
MAX. PRESSURE ON CONCRETE*	61 bar (884 p.s.i.)	76 bar (1102 p.s.i.)	61 bar (884 p.s.i.)
CONCRETE CYLINDERS (Ø X STROKE - mm)	230x2000 (9"x79")		
S-VALVE DIMENSION	8"		
NUMBERS OF CYCLES PER MINUTE	27	30	37
CONCRETE HOPPER CAPACITY	600 l (21 ft³)		
OUTPUT OPENING	180 mm (7")		

\*Cannot be reached simultaneously

## PLACING BOOM - specification

MAX. VERTICAL REACH	26.4 m (86'7")
MAX. HORIZONTAL REACH	22.4 m (73'5")
MAX. DOWNWARD REACH	-16.4 m (-53'9")
SECTION NUMBER	4
MIN. UNFOLDING HEIGHT	5.9 m (19'4")
FLEXIBLE TERMINAL HOSE	Standard
ROTATING ANGLE	370°
SECTION OPENING ANGLES	90° - 180° - 255° - 260°
OPENING SYSTEM	"Multi Z"
FRONT OUTRIGGERS	Telescopic single "X"
REAR OUTRIGGERS	Diagonal fixed
FRONT OPENING	6,30 m (20'8")
REAR OPENING	3 m (9'10")

## MAIN FEATURES

### PUMPING GROUP

- Pumping unit with open hydraulic circuit. Efficiency and simple maintenance.
- Concrete S-valve made of anti-wear fusion material.
- Pumping unit with automatic centralized lubrication system.
- Automatic oil lubrication system for pumping pistons.
- Automatic wear compensation system between wear plate and cutting ring. High wear resistance with carbide insert and maximum pumping efficiency.
- Chrome-lined concrete cylinders at high resistance.
- Hydraulic pumps with variable displacement and constant capacity adjuster.
- Gear hydraulic pumps for service purposes.
- Conveying chamber made of steel with high wear resistance.
- Remote concrete flow rate regulation, start and emergency stop control.
- Large capacity concrete hopper made of antiwear steel. Optimal shape designed to avoid concrete stagnating.
- Mixer shaft with screwed blades made of anti-wear steel.

### PLACING BOOM & STABILIZATION

- Placing boom 4 sections, folding type "Z", pipeline diameter 125 mm (5"), ideal for movements in limited spaces. Top quality steel, made by welded box section, headings obtained directly from the cores.
- Pump made by high-yield tensile strength steel, FEM designed.
- Boom hydraulic pump with fix displacement.
- Hinge points made with double support pin and "long-life" lubrication.
- Hydraulic cylinders made by high yield strength steels.
- "Overcenter" valves fixed directly on the oil inlet: allows smooth boom operation and high reliability.
- Hydraulic proportional distributor.
- Boom rotation managed by safety limit switch with hydraulic brake system and valves "anti-shock".
- Front outriggers "X" opening; rear outriggers "diagonal fixed" opening. Separate operation controls on both sides of the equipment. Position held by hydraulic check valves.

### ASSEMBLY on vehicle

2-Axles chassis

Wheelbase 4.400 - 4.800 mm (14'5" - 15'8")

Total weight

< 19 t (41887 lb)

## STANDARD EQUIPMENT

- Nr. 2 proportional radio remote controls provided with double speed in boom moving, automatic free frequency research, manipulators with 8 positions and delivery capacity converter.
- Safety block-out at the opening of tank outlet hatch and hopper grid.
- Washing nozzle.
- Set of manometers and mini flexible hoses to supervise the pressure.
- Membrane water pump 75 l/min, 30 bar.
- Electric vibrator on hopper grid remote controlled.
- Water tank capacity 600 liters (158.5 gallons).
- Heat exchanger with hydraulically controlled fan.
- Light projector on hopper.
- Level readers for stabilization control.
- Metal basket for accessories on the hopper side.
- Hard plastic plates for outrigger support and housing with safety lock.
- Switchboard fully protected on the right side.
- Stepladder to access the footboard for enable inspection and maintenance.
- Tool kit for cleaning and maintenance.
- Rubber end hose mounted on the boom.
- Spare parts manual & maintenance manual.

## ACCESSORIES ON REQUEST

- Concrete double wall pipeline with tempered core.
- Additional light projector on hopper.
- Multi-level water pump.
- Kit lights and claxon on the boom.
- Pipe holder.
- Automatic release of terminal hose.
- High pressure water pump with fan-shaped hose nozzle.
- Atomizer 25 liters stainless steel.
- Compressor for pipeline cleaning.
- Aluminum cover for hopper.
- Kit "stop-flow".
- Kit "PROfessional".



**SERMAC SRL**  
Via A. Manzoni, 146  
20811 Cesano Maderno (MB), Italy  
Phone +39 0362 364320  
Fax +39 0362 1632000  
www.sermacpumps.com  
info@sermacpumps.com

COMPANY WITH  
QUALITY SYSTEM  
CERTIFIED BY DNV GL  
= ISO 9001 =



REPRESENTED BY: